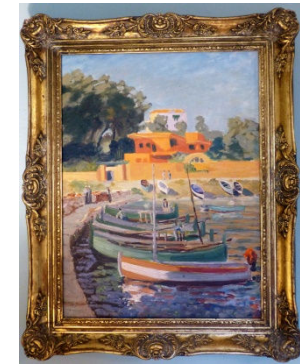


## Autumn Tour to Kent

At **Chartwell**, Churchill's home on the South Downs



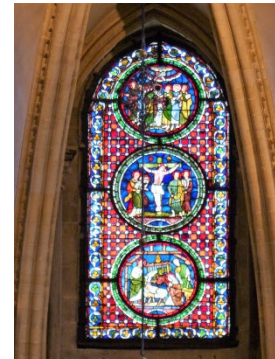
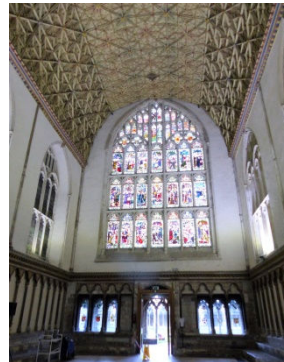
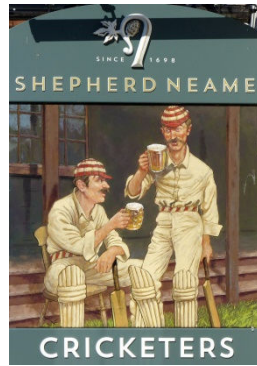
**Ightham Mote**, one of the oldest medieval manor houses to survive in England, a distinctive building, inside and out, with some art treasures (*now National Trust*)





## Autumn Tour to Kent

Canterbury, the town and the cathedral, with more treasures

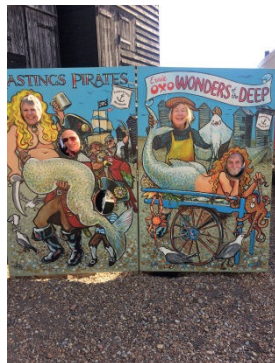


## Autumn Tour to Kent

Great Dixter, historic house and beautiful garden



Hastings, for some play time...

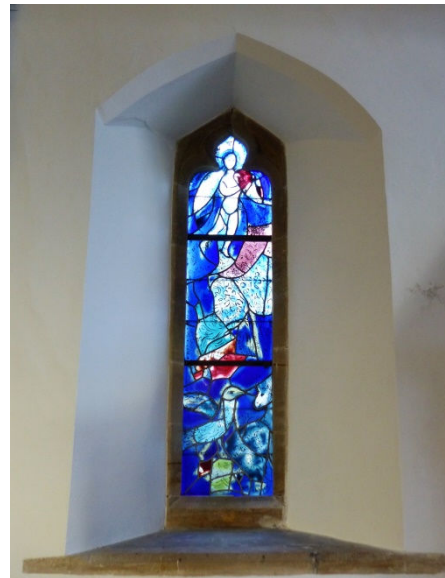


## Autumn Tour to Kent

**Hever Castle**, 700 years of history at this romantic double-moated castle



**Tudeley Church**, with windows by Marc Chagall



*All photos courtesy Henry and Mary Alpass, With Thanks*